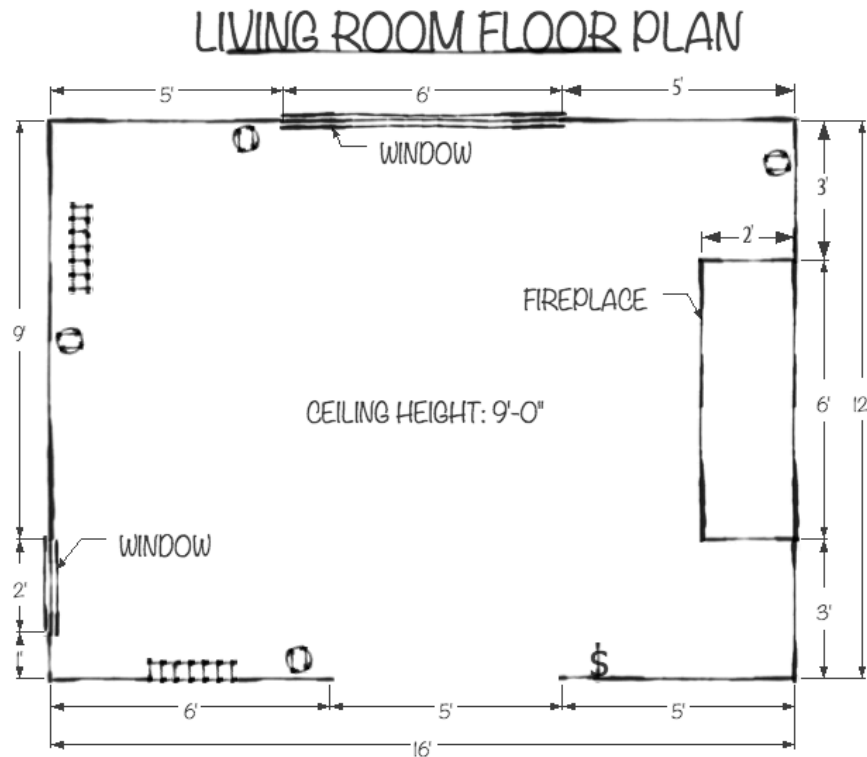


---

# Measuring Guide

## How to measure:

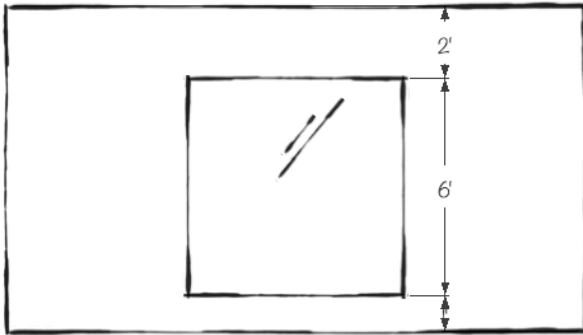
1. Draw the shape of your room, noting windows, doors and other objects such as a fireplace (It doesn't have to be pretty or to scale.) This is called your Floor Plan.
2. Measure the length of each wall including the windows and doors etc. and mark in on your drawing (See measuring guide- floor plan)
3. Draw the shape of each wall including any windows, doorways, a fireplace, or anything else of importance. These are called Elevations.
4. Measure the ceiling height and label on plan. If there is a change in ceiling height indicate this on the elevations.
5. Mark on the floor plan any switches, plugs, registers, cold air returns.
6. Mark direction North on floor plan.



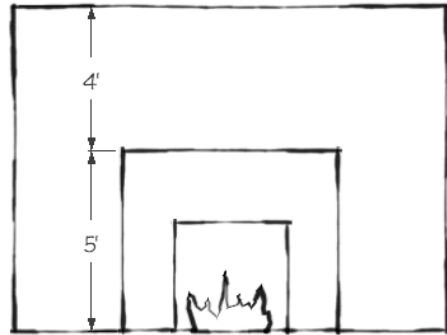
SYMBOLS:

\$	SWITCH
○	PLUG IN
	REGISTER

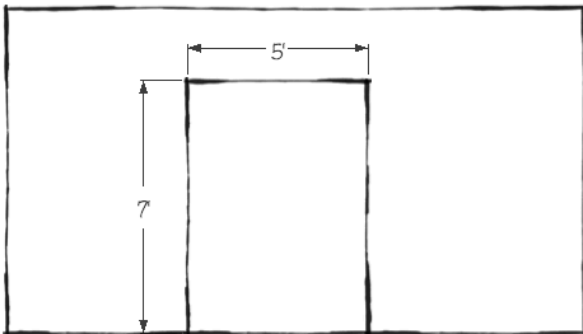




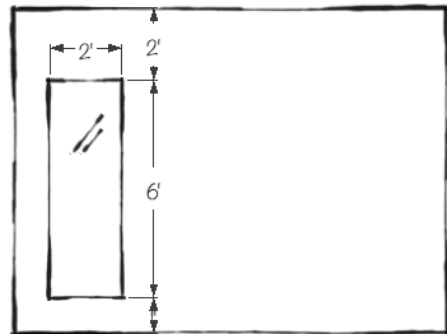
NORTH ELEVATION



EAST ELEVATION



SOUTH ELEVATION



WEST ELEVATION